

# Sonetto

*Air Compressors*



SONETTO 8-20

**ALUP**  
Kompressoren

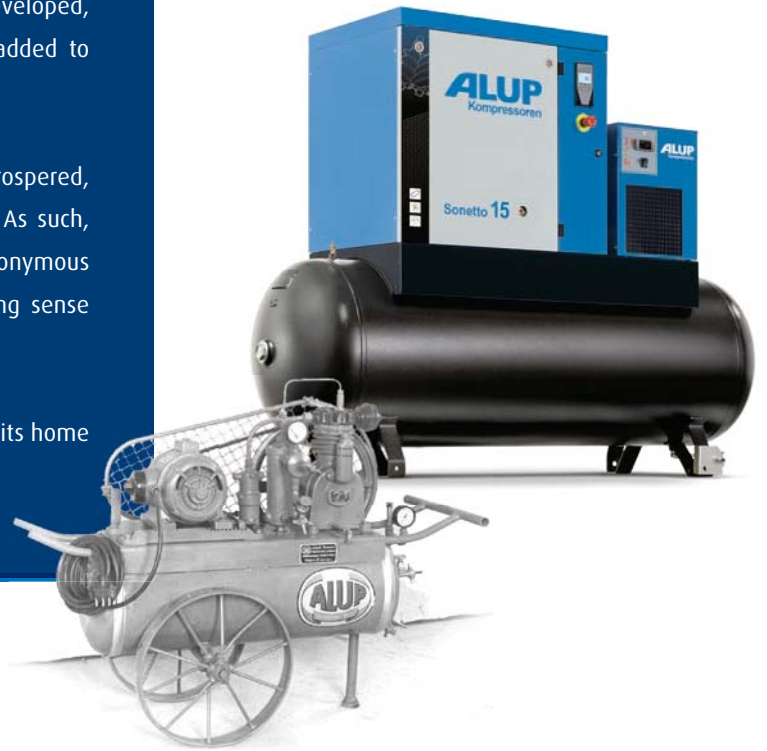


## ALUP's heritage

Founded in Germany in 1923, the company derives its name from the automotive products that were manufactured in the Köngen' mechanical workshop where ALUP came into existence: Auto-LUft-Pumpen. Only two years later, the first range of piston compressors was being developed, whilst in 1980 rotary screw compressors were added to product offer.

Over time, experience grew and innovation prospered, leading to today's high quality product portfolio. As such, the name ALUP Kompressoren has become synonymous with innovative technology blended with a strong sense of tradition.

Today, ALUP Kompressoren is still operating out of its home town Köngen, where everything started in 1923.



## Driven by technology Designed by experience

Discover what happens when a passion for technology is fused with hands-on industrial experience. Designs evolve towards more practical installation and maintenance, giving you the freedom to focus on your job. Product ranges include the exact machine you need, with the right options for your performance needs. Return on investment is ensured, while your carbon footprint shrinks. And, because we stay close to our customers, we're one step ahead when your needs change.

**INNOVATION  
HANDS-ON  
EXPERIENCE  
PEACE OF MIND  
TOTAL COST  
OF OWNERSHIP  
PARTNERSHIP**

## The range that meets all your requirements

*With the Sonetto 8-20 range you obtain an efficient, reliable and complete solution, designed to fit your precise requirements.*

### A wide offer

- Power size available from 8 up to 20 hp.
- 3 pressure variants.
- The complete range can be mounted on air vessels (270 & 500L) and equipped with refrigerant dryers, pre and post filters.

### Highly efficient air filtration & oil separation

- High level air intake prevents larger dust particles from entering.
- 2 micron encapsulated filters guarantee that only clear air enters the compressor, improving overall reliability.
- The oil separator ensures less than 3 ppm of oil carry over thanks to cyclonic, gravity and filter separation.

### Easy accessibility

- Easy service thanks to removable panel.
- Main components strategically placed to facilitate and speed up maintenance.
- Low maintenance costs.
- Easy oil level check via external oil level sight glass.

### The options you need

- 8000h Oil.
- Food Grade Oil.
- Timer Drain on Air Receivers.
- Stirrups for transport.
- Wooden crate.

[www.alup.com](http://www.alup.com)

## Small dimensions, great flexibility

The Sonetto range is available as floor mounted, air receiver mounted, air receiver mounted with dryer and air receiver mounted with dryer and filters (pre + post filters). The air receiver is available in two capacities: 270L and 500L. With this large variety of configurations, power sizes and pressures, Sonetto sets a new standard for operational power, quality, safety, service life and user comfort.

### User benefits

#### A complete solution

- Sonneto can always be assembled with the right configuration for your business needs.
- With an all-in-one design, the units can be equipped with air receiver and complete air treatment package: refrigerant dryer, pre and post filters.

#### Easy and fast maintenance

- All service components located at the front of the machine for fast accessibility.
- All service components strategically located for fast accessibility.
- Oil-level sight glass at the front, visible without removing any panel.
- Maintenance warnings on the controller.
- Service and cleaning is a one person job.





## A complete solution suitable to satisfy your air demand



### Quiet operation

- Special noise insulation ensures very low noise levels.
- Equipment can be easily installed inside the workshop, close to the usage point, minimizing risk of air leakages and without any disturbance of your working environment.

### Cost efficiency

- Reliable design.
- Low maintenance costs.
- Long service intervals.
- Low energy consumption, thanks to reputed IE3 Motors and advanced screw compressor element.
- High performing lubrication and cooling systems.



### High quality air delivery

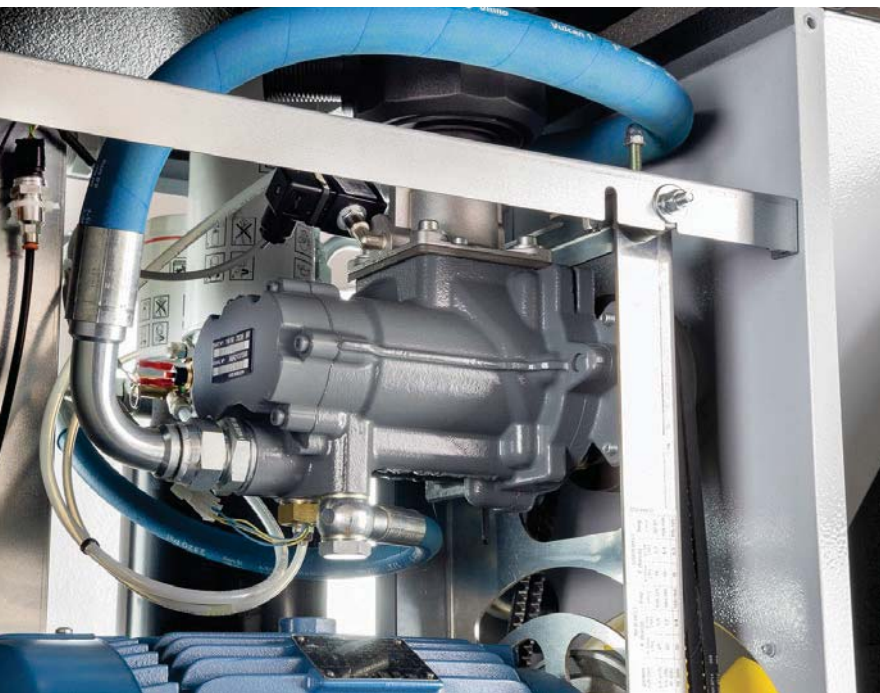
Units built on Air Receiver can be equipped with an air treatment package composed by a refrigerant dryer, pre and post filters. This air treatment package guarantees dry and very clean air, perfect for the most demanding applications.

# Optimize your operations

## Infologic<sup>2</sup> basic controller

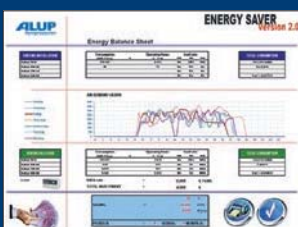
The Infologic<sup>2</sup> basic controller offers advanced monitoring with maintenance, failure management and simplifies the configuration and control of your operation.

- Icon based display.
- Pressure and temperature readings.
- Remote start stop.
- Automatic restart after a power failure.
- Maintenance service warnings.
- Fault management.
- Fast pressure setting, directly on the controller.



## Next generation air ends

A new generation of compressor elements, ensures high performance allied to low energy consumption and a very long lifetime for your investment.



## Energy audit

Knowing what compressor is right for your application is critical to minimizing the energy consumption. With our energy audit we can simulate your compressed air needs and then consult you on the best solution for your needs.

For more information, please contact your local ALUP representative.

## Technical specifications

Model	Max. Working Pressure	Reference Working Pressure	Free Air Delivery @ reference conditions*			Motor Power		Noise Level**	Weight			
	Bar	Bar	m³/h	l/s	cfm	kW	hp	db(A)	Base Mounted kg	270L Tank kg	270L Tank Dryer kg	270L Tank Dryer and Filters kg
Sonetto 8	8	7.5	50.8	14.1	29.9	5.5	7.5	64	160	207	242	247
	10	9.5	41.8	11.6	24.6							
Sonetto 10	8	7.5	68.4	19	40.3	7.5	10	65	170	217	250	255
	10	9.5	59.8	16.6	35.2							
	13	12.5	46.8	13	27.5							
Sonetto 15	8	7.5	97.2	27	57.2	11	15	69	185	232	265	270
	10	9.5	85	23.6	50							
	13	12.5	69.1	19.2	40.7							
Sonetto 20	8	7.5	111.6	31	65.7	15	20	71	200	247	280	285
	10	9.5	100.8	28	59.3							
	13	12.5	79.9	22.2	47							

\* Unit performance measured according to ISO 1217, Annex C, latest edition.

\*\* Noise level measured according to ISO 2151 2004.

	Length	Width	Height
	mm	mm	mm
Base	850	720	980
270L	1543	720	1337
500L	1945	720	1468

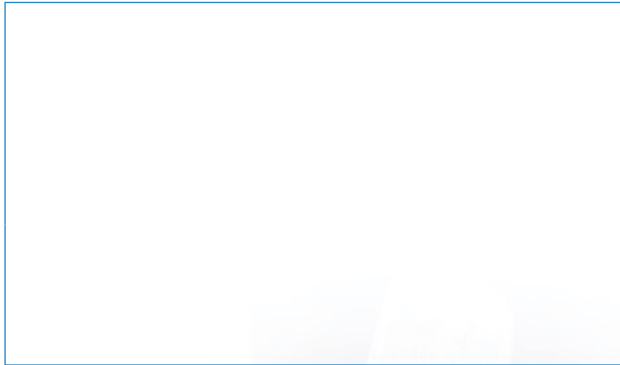




DRIVEN BY TECHNOLOGY DESIGNED BY EXPERIENCE



CONTACT YOUR LOCAL  
ALUP REPRESENTATIVE



Care. Trust. Efficiency.

**Care.**

Care is what service is all about: professional service by knowledgeable people, using high-quality original parts.

**Trust.**

Trust is earned by delivering on our promises of reliable, uninterrupted performance and long equipment lifetime.

**Efficiency.**

Equipment efficiency is ensured by regular maintenance. Efficiency of the service organization is how Original Parts and Service make the difference.

6099-640253

[www.alup.com](http://www.alup.com)